

Aufführungsrecht vorbehalten.

Fantasie

aus der Oper: „Die diebische Elster“
von Rossini.

Mandoline I.

Moderato.

Allegro.

Brillante.

Moderato.

Mandoline I.

Presto.

Musical score for Mandoline I, Presto section. It consists of seven staves of music in 2/4 time, starting with a key signature of one flat. The first staff has triplets and a forte (*f*) dynamic. The second staff has *sf* and *p* dynamics. The third staff has *sf*. The fourth staff has a 'C' marking. The fifth staff has a 'D' marking. The sixth staff has a 'b' marking. The seventh staff has an 'E 1' marking and a ritardando (*rit.*) marking.

Andante.

Musical score for Mandoline I, Andante section. It consists of two staves of music in 6/8 time with a key signature of three sharps.

Allegro.

Musical score for Mandoline I, Allegro section. It consists of two staves of music in 2/4 time with a key signature of three sharps. The first staff has a forte (*f*) dynamic.

Mandoline I.

The first system consists of two staves of music. The top staff contains a melodic line with various rhythmic values and accidentals. The bottom staff contains a more complex accompaniment with many sixteenth notes and rests. A dynamic marking of *f* is placed below the first measure of the bottom staff. A chord symbol 'F' is written above the first measure of the bottom staff. The system concludes with a *p* dynamic marking.

Meno mosso.

The second system consists of two staves of music. The tempo is marked 'Meno mosso'. The music continues with a melodic line and a rhythmic accompaniment. The system ends with a double bar line and a key signature change to one sharp (F#).

Allegro con brio.

The third system consists of two staves of music. The tempo is marked 'Allegro con brio'. The music features a more active melodic line and accompaniment. A dynamic marking of *p* is present at the beginning. A chord symbol 'G' is written above the second measure of the bottom staff.

The fourth system consists of two staves of music. The music continues with a melodic line and accompaniment. A dynamic marking of *p* is at the end of the first staff. The second staff begins with a *cresc.* marking.

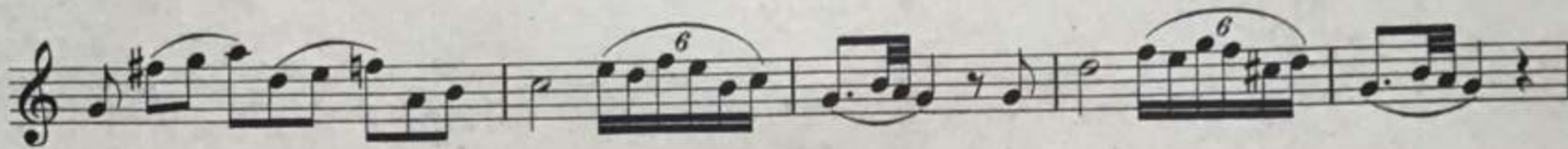
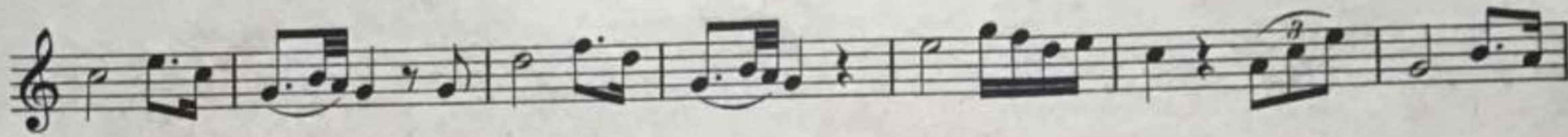
Moderato.

The fifth system consists of two staves of music. The tempo is marked 'Moderato'. The music changes to a 3/4 time signature. A dynamic marking of *mf legato* is present. A first ending bracket is shown above the first staff. The system ends with a *p* dynamic marking.

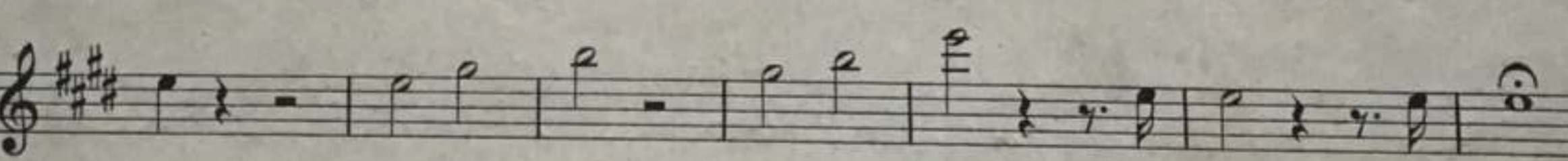
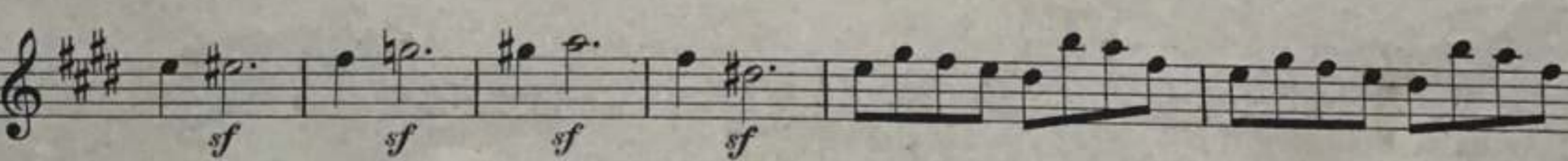
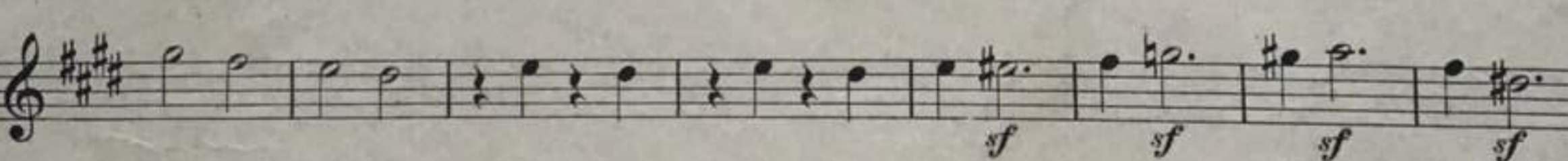
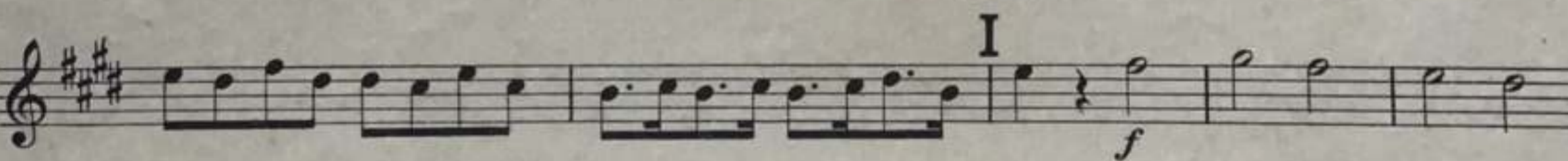
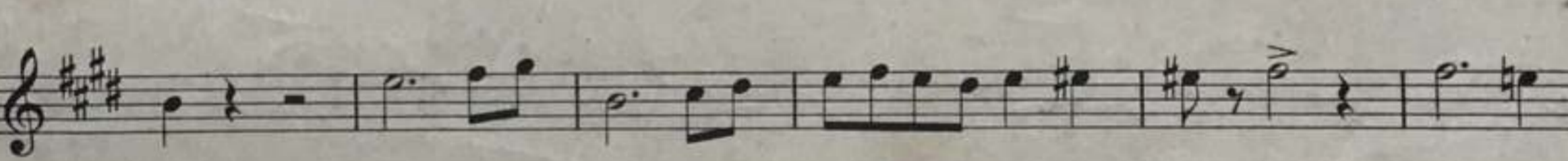
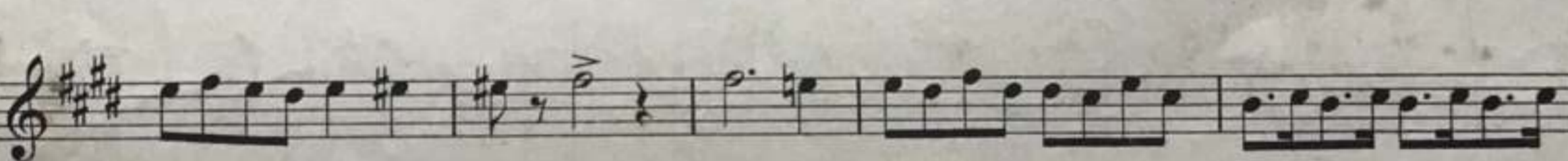
The sixth system consists of two staves of music. The music continues with a melodic line and accompaniment. A *cresc.* marking is at the beginning, and a *f* dynamic marking is at the end.

Mandolino I.

Andantino.



Allegro.



Aufführungsrecht
vorbehalten.

Fantasia

aus der Oper: „Die diebische Elster“

von Rossini.

Mandoline II.

Moderato.

Musical notation for the Moderato section, measures 1-12. The music is in 3/4 time and begins with a forte (*f*) dynamic. It features a series of eighth and sixteenth notes with rests, creating a rhythmic pattern. The key signature has one sharp (F#).

Allegro.

Musical notation for the Allegro section, measures 13-24. The music is in 6/8 time and begins with a piano (*p*) dynamic. It features a series of dotted eighth notes and sixteenth notes. A section marked 'A' begins at measure 15. The key signature has three sharps (F#, C#, G#).

Brillante.

Musical notation for the Brillante section, measures 25-36. The music is in 6/8 time and begins with a piano (*p*) dynamic. It features a series of eighth and sixteenth notes with rests, creating a rhythmic pattern. A section marked 'B' begins at measure 25. The key signature has three sharps (F#, C#, G#).

Maestoso.

Musical notation for the Maestoso section, measures 37-48. The music is in common time (C) and begins with a piano (*p*) dynamic. It features a series of eighth and sixteenth notes with rests, creating a rhythmic pattern. The key signature has two flats (Bb, Eb).

Mandoline II.

Presto.

1 *f*

1

sf *p*

sf *p*

C

D

E 1

Andante.

1

Allegro.

f

f

F

f *p*

Meno mosso.

f *p*

1

Allegro con brio.

1 *p*

G

cresc.

Moderato.

1 *mf*

p

cresc.

f

Andantino.

p

H

f

Allegro.

1 *p*

I

f

sf sf sf sf sf sf sf

sf

trahle 2.80

Fantasia

aus der Oper: „Die diebische Elster“

von Rossini.

Mandola.

Moderato.

Allegro.

Brillante.

Mandola.

Presto.
 1 *f*

sf p C

D

E 1 **Andante.**
 1

Allegro.
f

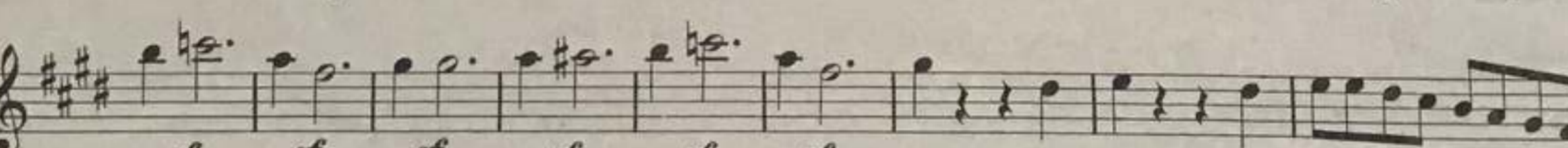
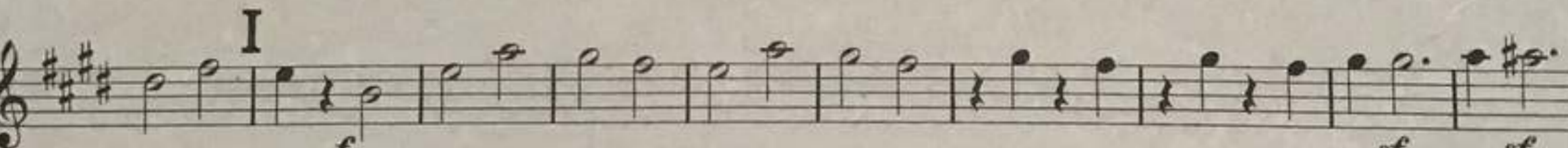
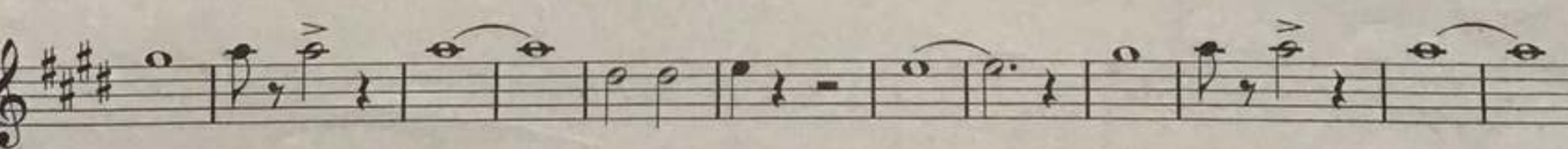
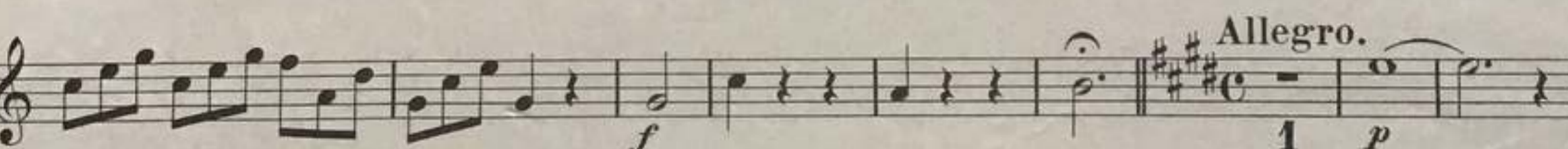
F **Meno mosso.**
f p f p 1

Allegro con brio.
 1 *p*

G

1

crere.



Fantasia

aus der Oper: „Die diebische Elster“
von Rossini.

Gitarre.

Moderato.

Allegro.

Brillante.

Maestoso.

A single musical staff in treble clef, key of B-flat major, and common time (C). It begins with a whole rest, followed by a series of chords and single notes, ending with a fermata over a chord.

Presto.

The first line of a musical staff in treble clef, key of B-flat major, and common time. It features a rapid sixteenth-note pattern starting with a forte (*f*) dynamic.

The second line of the Presto section, continuing the sixteenth-note pattern with dynamics *sf* and *p*.

The third line of the Presto section, continuing the sixteenth-note pattern.

The fourth line of the Presto section, including a chord change marked with a 'C' above the staff.

The fifth line of the Presto section, continuing the sixteenth-note pattern.

The sixth line of the Presto section, including a chord change marked with a 'D' above the staff.

The seventh line of the Presto section, continuing the sixteenth-note pattern.

The eighth line of the Presto section, continuing the sixteenth-note pattern.

The ninth line of the Presto section, including a chord change marked with an 'E 1' above the staff.

Andante.

The first line of a musical staff in treble clef, key of D major, and 6/8 time. It features a slower, more spacious sixteenth-note pattern with a *par.* (parallel) marking.

The second line of the Andante section, continuing the sixteenth-note pattern and ending with a chord change marked with a 'C' above the staff.

Allegro.

The first section of the music is marked 'Allegro'. It consists of four staves of music. The first staff begins with a treble clef, a key signature of two sharps (F# and C#), and a common time signature (C). The music features a mix of eighth and sixteenth notes, with some rests and dynamic markings such as *f* (forte). The second and third staves continue the melodic and harmonic development with similar rhythmic patterns. The fourth staff concludes the section with a double bar line and a final chord.

Meno mosso.

The second section is marked 'Meno mosso'. It begins with a treble clef, a key signature of two sharps, and a common time signature. The first staff contains a series of chords and rests, with dynamic markings *f*, *p*, *f*, and *p*. The second and third staves feature a dense texture of chords, primarily triads and dyads, creating a harmonic accompaniment. The fourth staff ends the section with a double bar line and a final chord.

Allegro con brio.

The third section is marked 'Allegro con brio'. It consists of five staves of music. The first staff begins with a treble clef, a key signature of two sharps, and a common time signature. The music is characterized by a driving eighth-note pattern in the right hand and a steady bass line in the left hand. Dynamic markings include *p* (piano) and *G* (guitar). The fifth staff concludes the section with a double bar line and a final chord.

cresc.

Guitarre.

4

Moderato.

paré.

mf

cresc.

p

Andantino.

p

H

f

Allegro.

p

I

f